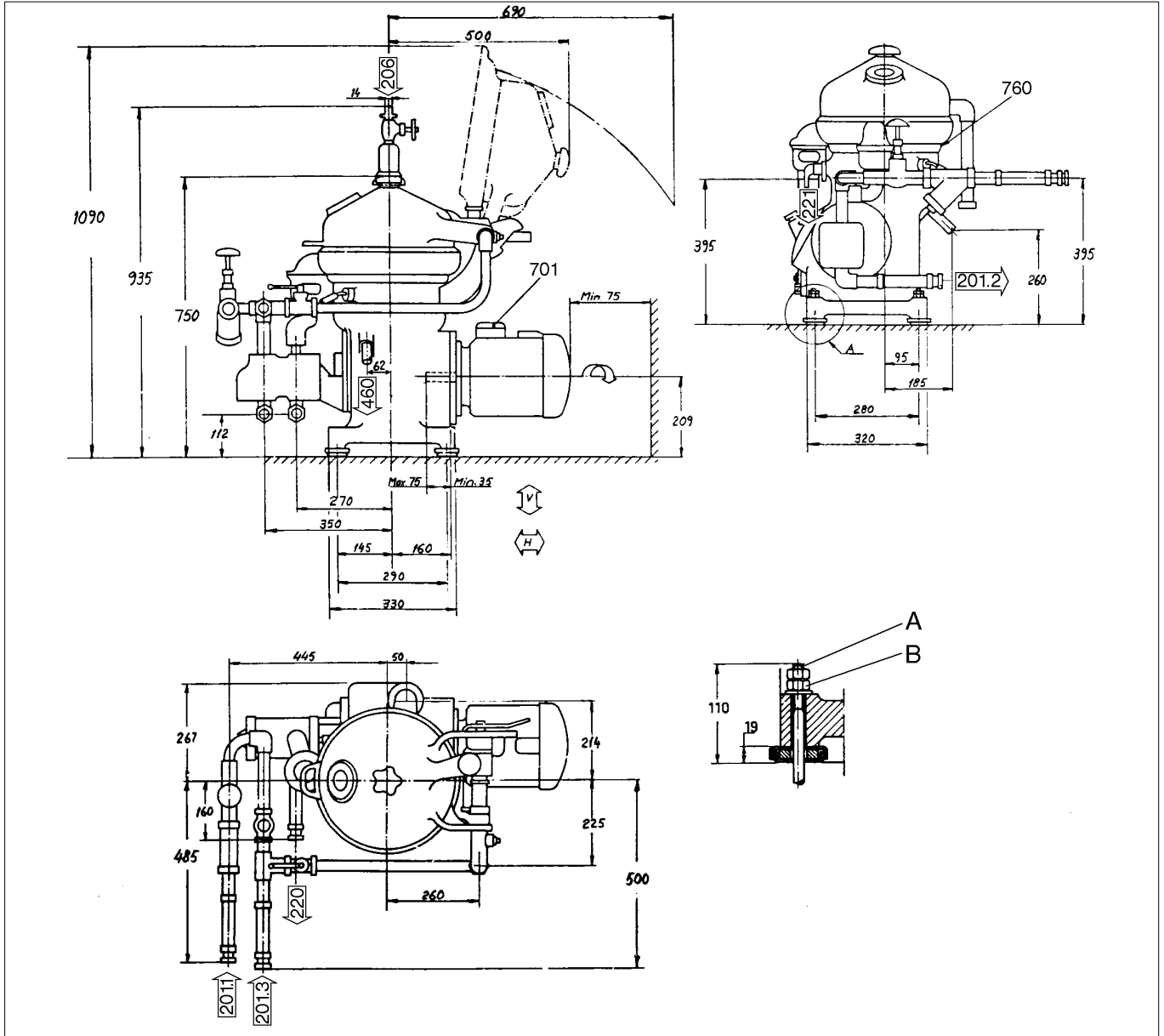


8.4 Basic size drawing for separator with pump

Alfa Laval ref. 558164, rev. 0



- A. Screw 3/8-16UNC
- B. Tightening torque 16 Nm, locked with lock nut



Vertical force not exceeding 8 kN/foot

Data for connections see "8.5 Connection list for separator with pump" on page 131.



Horizontal force not exceeding 8 kN/foot

All connections to be installed non-loaded and flexible.

G0625711

8.5 Connection list for separator with pump

Alfa Laval ref. 558166, rev 0

Connection No.	Description	Requirements/limit
201.1	Inlet for process liquid, (to pump) - Allowed temperatures	Min. 0 °C, max. 100 °C
201.2	Outlet for process liquid, (from pump to heater)	
201.3	Inlet for process liquid, (from heater to separator)	
206	Inlet for water seal	Fresh water, approx. 2.5 litres (depending on gravity disc)
220	Outlet for light phase (oil from pump)	No counterpressure
221	Outlet for heavy phase (water)	No counterpressure
460	Drain of frame	
701	Motor for separator - Max. deviation from nominal frequency (momentarily during maximum 5 seconds)	±5% ±10%
760	Cover interlocking switch (delivered as option) Type: Double, two-way microswitch Switch rating: Voltage Current	Max. 500 V Max. 3 A